

A-EON Technology

NEWS RELEASE

Introducing Tabor and the A1222

A powerful, low cost, entry level PowerPC motherboard

San Francisco 19th October 2015

A-EON Technology is pleased to announce that *Tabor*, a new powerful, low cost, entry level PowerPC motherboard, which forms part of our A1200 series, is about to undergo beta testing.

As part of our drive to create more powerful lower cost, entry level hardware and expand the Next-Generation user base we commissioned Ultra Varisys to create a new PowerPC motherboard. The result is *Tabor*, a 170 mm x 170 mm mother-

board based on a Freescale QorIQ P1022 32-bit e500v2 dual-core PowerPC processor running at 1.2 GHz. Prototypes have already been shipped to key developers and members of A-EON Technology's Core Linux support team and, as a result, several Linux distributions are already up and running on the *Tabor* board. Working in cooperation with *ACube srl*, a beta test programme is about to commence, which is already over-subscribed. The full system is designated the *AmigaOne A1222*.

For more details please visit:

www.a-eon.com



Tabor specifications*

(Subject to change without notice)

PowerPC CPU: Freescale QorIQ P1022, 1.2GHz, 32-bit, e500V2, dual-core
•1x CPU fan + heatsink

•2x fan ports
DDR3 SODIMM
•64 bit interface
•400Mhz
•Support up to 8GB RAM

RS232 Serial
•1x RS232 including flow control
•Level shifting from TTL UART serial levels to RS232 levels
•Maximum baud rate of 230,400

SATA
•2x SATA 2.6 compliant controllers
USB

•2x External & 2x Internal USB port
Ethernet

• 1x RGMII ethernet PHYs each providing Gbit ethernet

PCIe
•x4 PCIe gen 1 link allows data rates of 2.5Gb/s per lane
•x16 PCIe connector to support RadeonHD graphics cards

Audio
•Audio CODEC generating stereo audio out from I2S digital audio

HDMI LCD Interface
•24 bit colour depth
•Support for resolution up to 1280x1024
•HDMI 1.3 support

GPIO
•Support for user GPIOs
•GPIO JTAG

Micro SD
•Micro SD card for boot - possibility of running the whole system from the microSD card

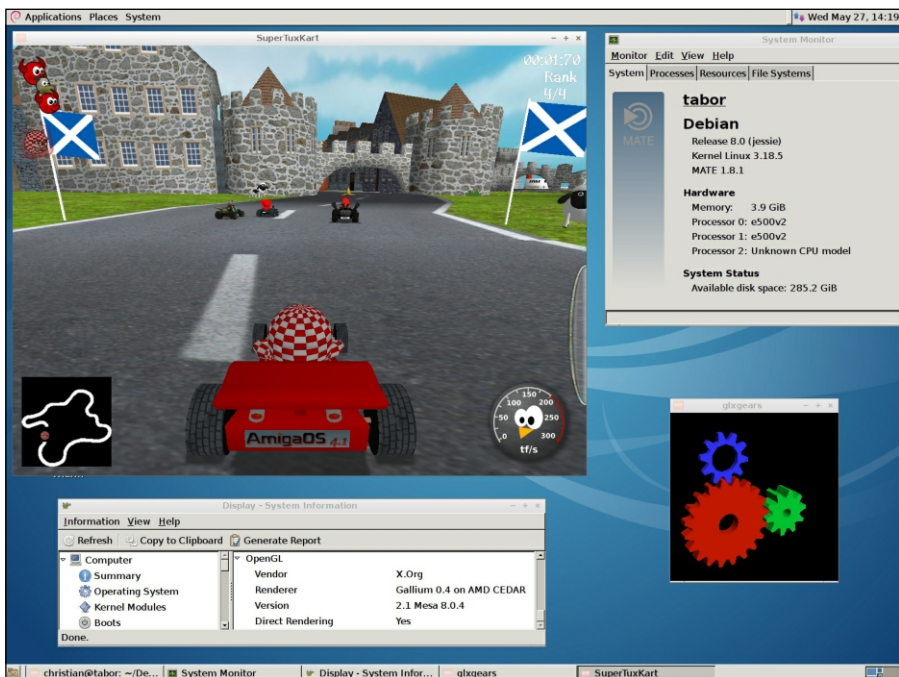
WCU Prog
LED ports for Power, CPU, HDD

our universe is expanding - Topaz



NEWS RELEASE

Debian Jessie running on Tabor Motherboard



Tabor Performance under Linux

- 3D hardware accelerated graphics ✓
- 3D game play ✓
- HD video playback ✓
- Fast & responsive ✓

Tabor Debian screengrab courtesy Christian Zigotzky, A-EON Technology Core Linux Team

Tabor bootscreen animation designed by Kevin Saunders



Tabor boot screen animation

